



Reducing through-traffic and supporting active mobility

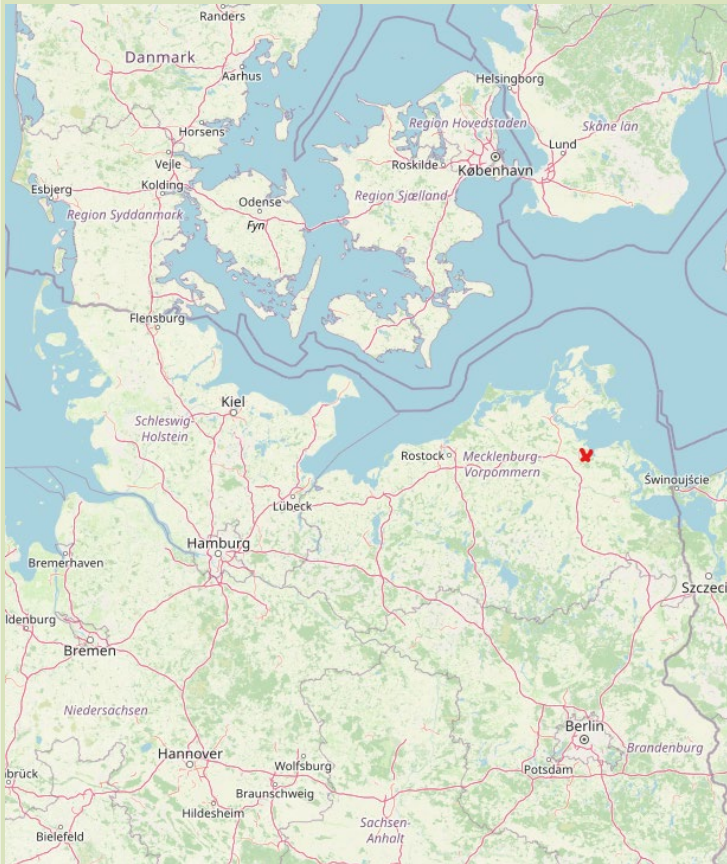


Stephan Braun

*Climate Protection Officer,
University and Hanseatic City of
Greifswald, Germany*

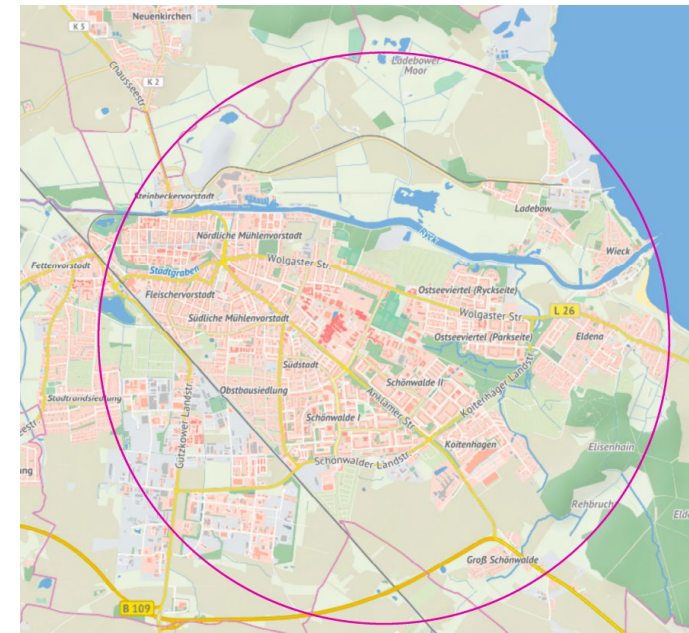
SUMP

Greifswald in a nutshell

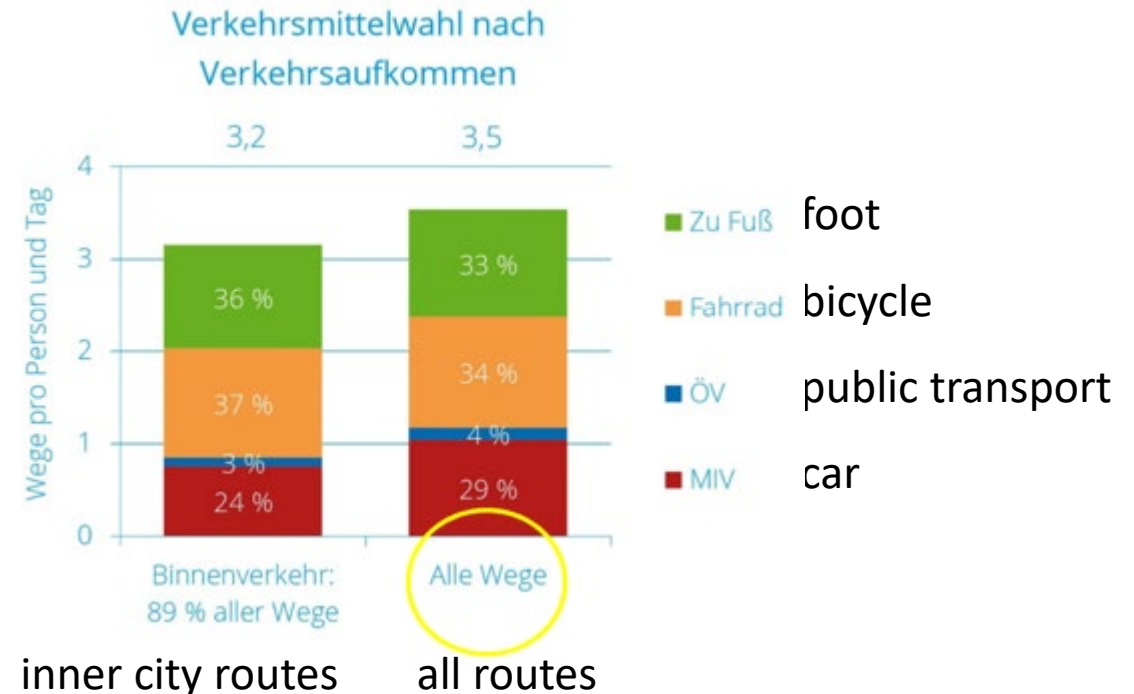


- Compact city
- 60.000 inhabitants (10.000 students)
- Old hanseatic town
- University town
- Bicycle share 34 %

- Radius: 3km (within 90% of inhabitants)



Modal split (Choice of transport mode according to traffic volume)



Inner City mobility

- Challenges
 - Through traffic (Parking search traffic, Noise, Emissions...)
 - Area allocation for traffic (historically grown city center)

Traffic Concept for City centre was confirmed by former city parliament but **rejected** by the new.

The plan must be revised with **greater involvement from local businesses** (car parking spaces for residents must not be removed).



Source:
greifswald.de/de/_galleries/Amt-60-Stadtbauamt/Verkehrskonzept-Innenstadt/2021-10-25_Schlussbericht-Greifswald-Verkehrskonzept-Innenstadt.pdf

Ongoing new traffic concept development...

But what can and should be done in the meantime?

Thinking in small, feasible solutions (small is beautiful).

Mobile parking solution
(testing locations)

Asking people –
short questionnaire via QR-code



Smaller solutions

The administration should set an example.

New bicycle parking facility for residents and administration staff



Smaller solutions

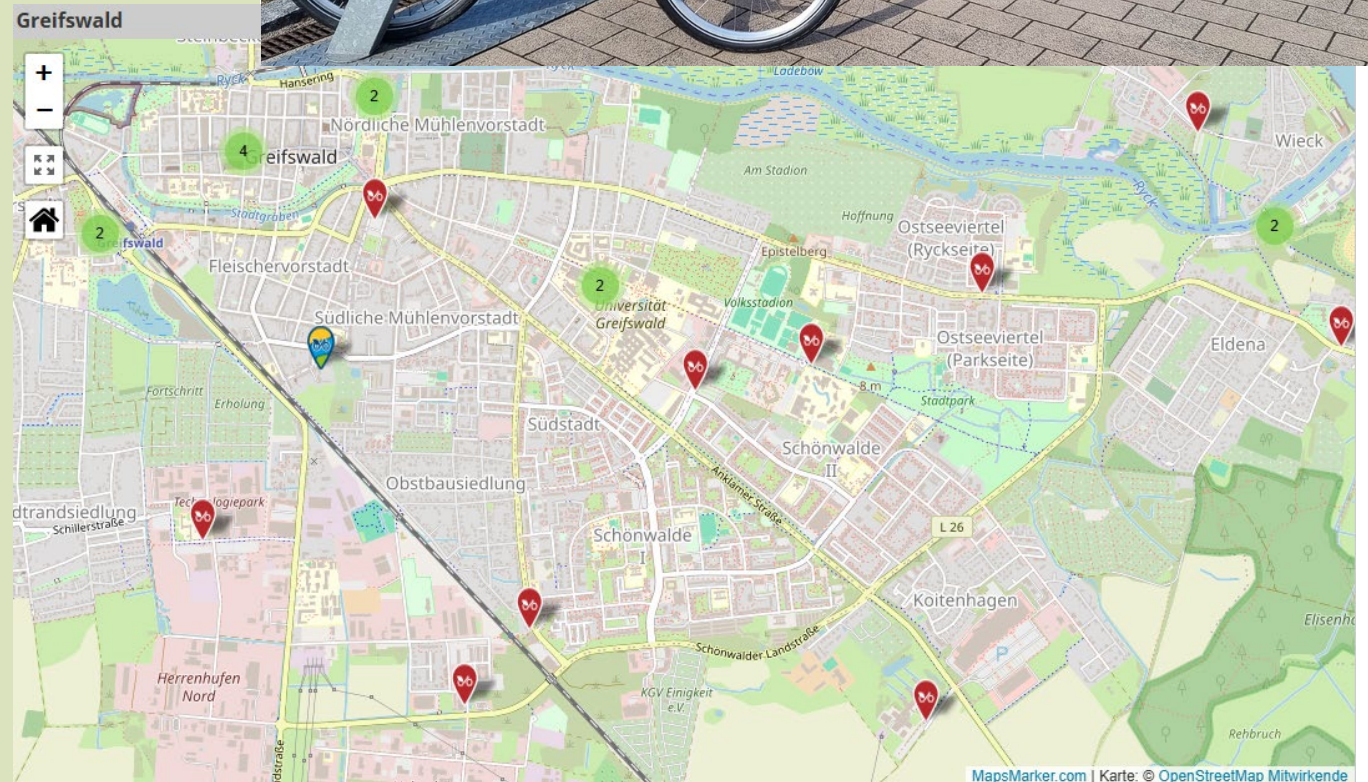
Create good conditions for commuters.



Source: <https://www.kienzler.com/aktuelles/radstation-am-bahnhof-in-greifswald-eroeffnet>

Smaller solutions

Bicycle renting system especially for tourists.



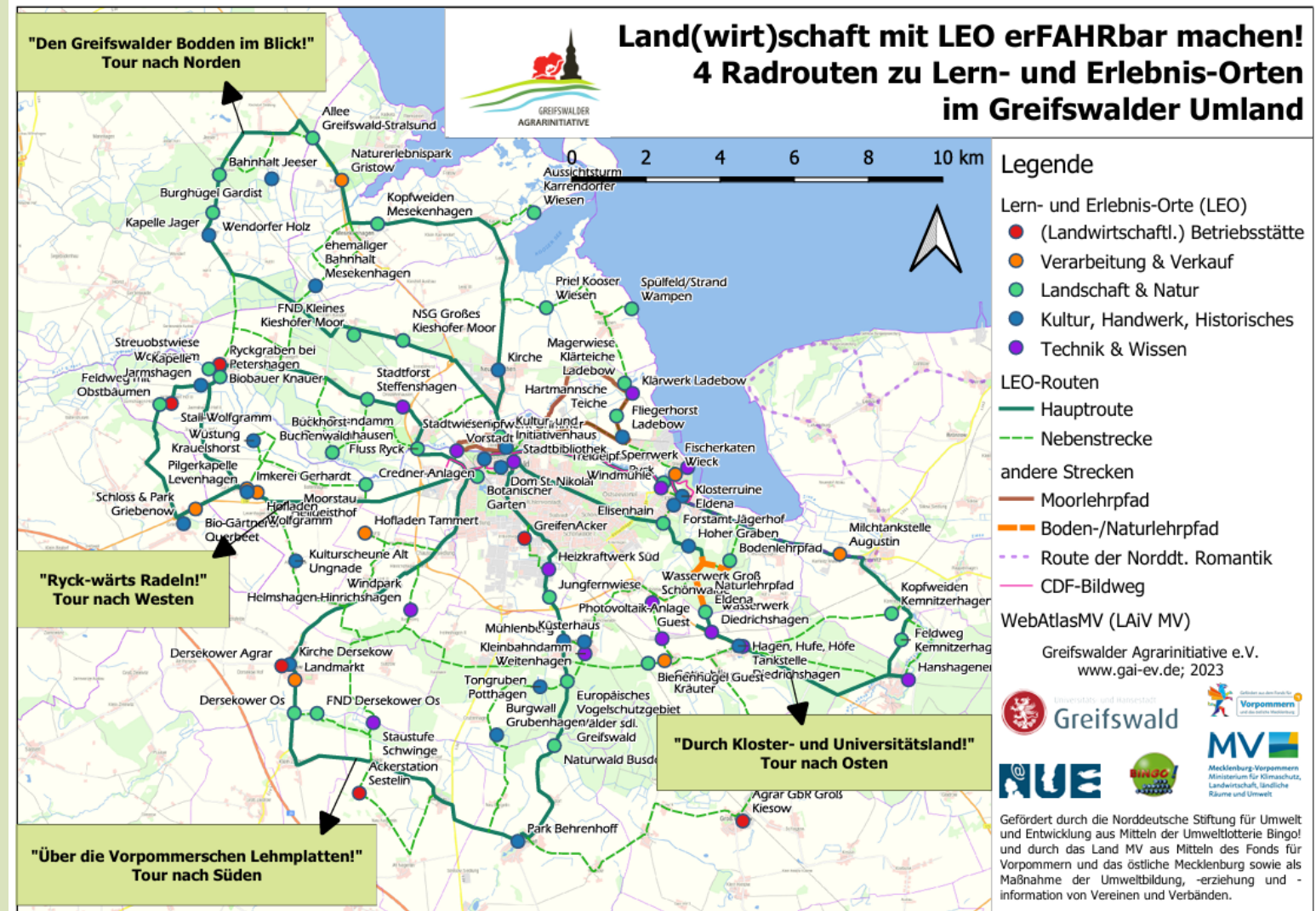
Source: <https://stadtrad-greifswald.de/interaktive-karte/>

Smaller solutions

Places for learning and experiences

Attractive cycling routes in surrounding area.

4 cycling routes (north, south, west, east) with different focuses developed by Greifswald agriculture initiative.



Smaller solutions

School mobility



improvements

Original plan: a transport trial in front of an elementary school

Transport trial was not possible but we could develop smaller solutions.



Smaller solutions

Campaigning – City Cycling (3 weeks)
starts with bicycle festival organized by
local supplier

Bicycle festival

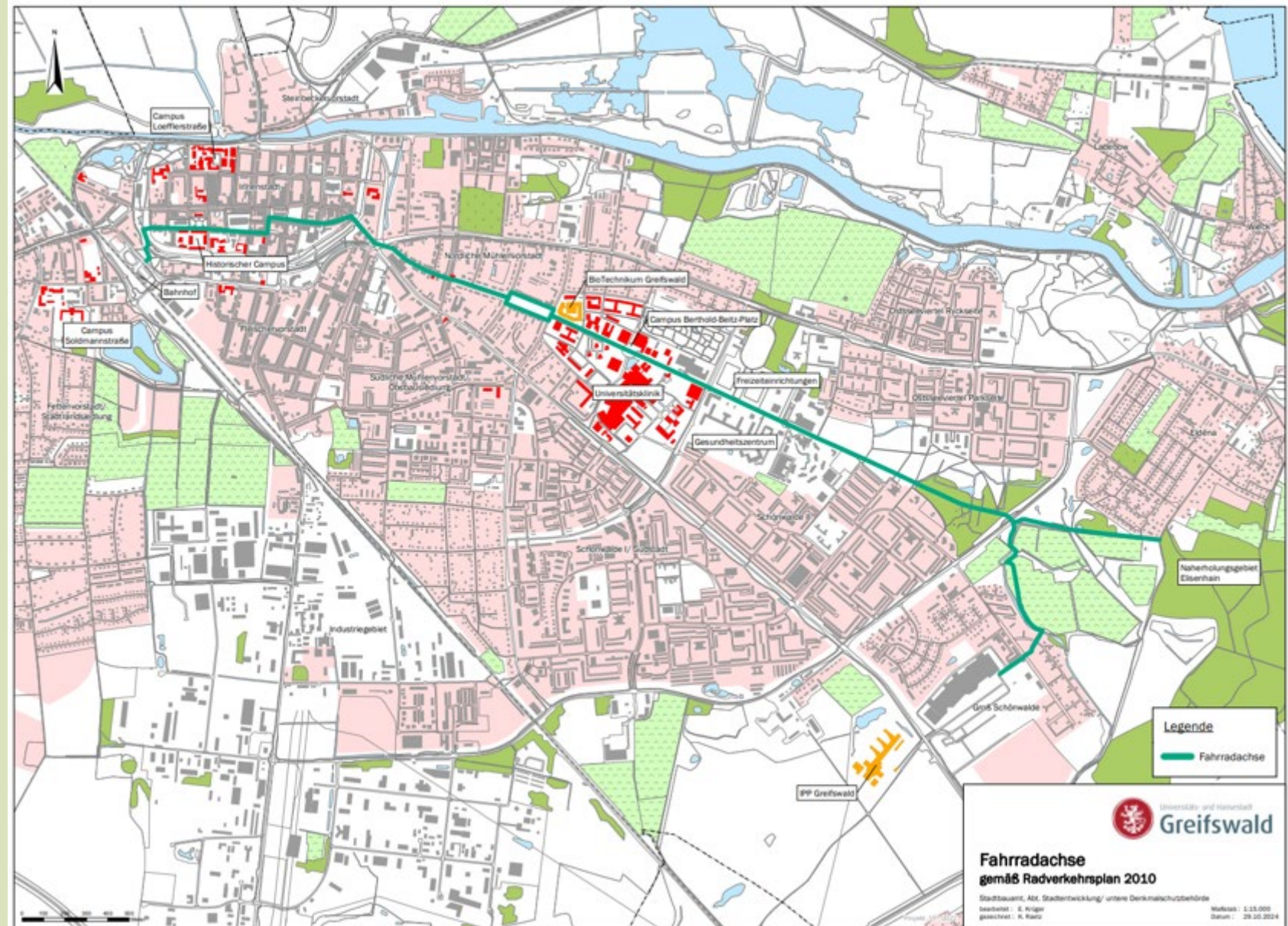


Central bicycle axis

“smaller” solutions

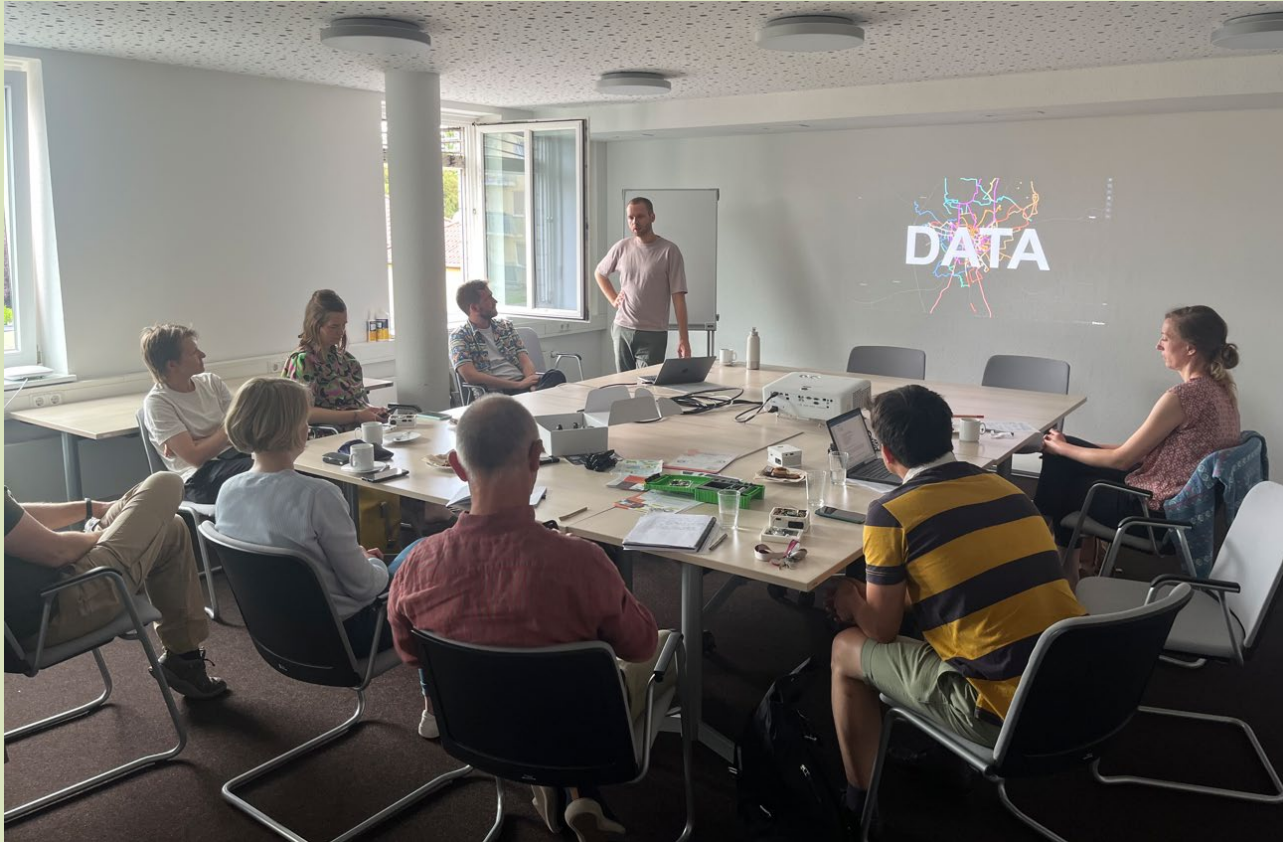
Cooperations

In our case, we have a joint project to improve cycling infrastructure together with our university and our university hospital at central bicycle axis.



Smaller solutions

Using new data collection methods



Mobile bicycle sensors



Source: <https://agfk-mv.de/2025/07/04/daten-fuer-sichere-wege-workshop-zur-senseboxbike-in-greifswald/>

smaller solutions

Presentations was more about cycling
but **do not forget pedestrians**



Sources: <http://www.caspar-david-friedrich-greifswald.de/caspar-david-friedrich-bildweg.html>

In many German cities, pedestrian traffic is a major winner in the current modal split (choice of transport) as a result of the mobility transition. (google AI)



<https://www.uni-greifswald.de/leben/greifswald-und-die-region/greifswald/sehenswuerdigkeiten/>

Key learnings

- **Small-scale pilots still deliver progress when larger plans fail**
- **Temporary solutions help identify where permanent investment is justified**
- **Monitoring was manual and limited, highlighting the need for better data collection in future pilots**

Contact

University and Hanseatic City of Greifswald

Stephan Braun

s.braun@greifswald.de

Karl Hildebrand

k.hildebrand@greifswald.de

Katharina Fels

k.fels@greifswald.de



Photo: Gudrun Koch